

TECHNICAL MANUAL

Arpol REPAIR CLAMP

Designed for quick repairs



®



Arpol

Summary

04–05 Arpol, your European manufacturer for couplings and repair clamps

06–07 Selecting the REPAIR CLAMP

08 Pipe material compatibility

09 Applications

10–11 In detail

12 In-depth

13 Additional information

14–21 Technical tables

14 Single band | Length 150 mm | EPDM | Stainless steel AISI 304L

16 Single band | Length 200 mm | EPDM | Stainless steel AISI 304L

18 Double band | Length 200 mm | EPDM | Stainless steel AISI 304L

20 Double band | Length 300 mm | EPDM | Stainless steel AISI 304L

22–23 Safe and easy to install

24–25 A development plan for a better future

26–27 Connect with Arpol



Arpol, your European manufacturer of couplings and repair clamps

Arpol launches its REPAIR CLAMP for fast and reliable pipe repairs

With nearly 50 years of experience in manufacturing stainless steel flexible couplings, Arpol continues to expand its product range and offer customized solutions.

We have helped hundreds of companies to connect and repair pipelines, providing support for even the most complex installations.

With the introduction of our REPAIR CLAMP, Arpol offers a versatile, cost-effective, and readily available solution for pipeline repairs.

Our flexible manufacturing process allows customers to place orders with no minimum quantity requirements, ensuring a precise response to their needs.

In the case of the REPAIR CLAMP, this manufacturing flexibility translates into a quick and tailored response to each customer's repair needs.

Greater
workplace
flexibility.



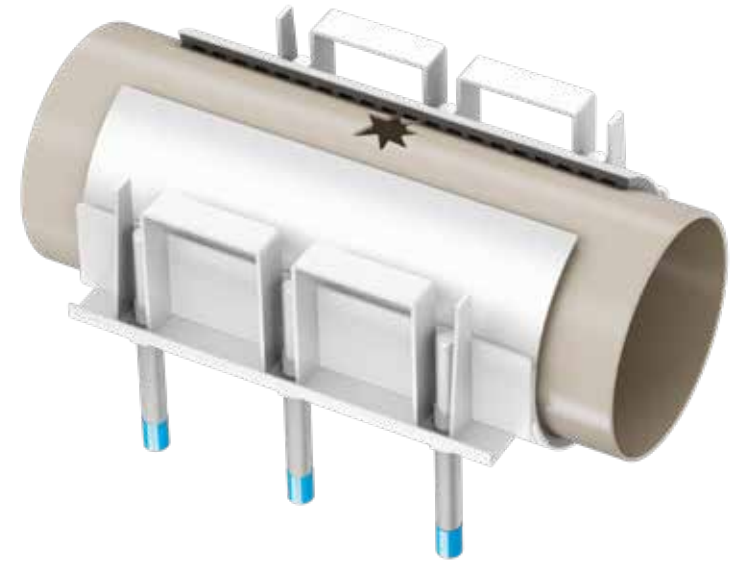
A more standardized, accessible, and cost-effective solution within our range of repair products.

Ø
44-488 MM

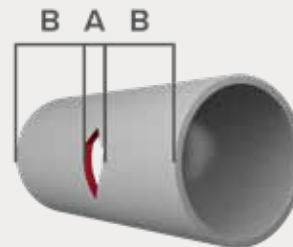
Selecting the REPAIR CLAMP

At Arpol, we recommend considering the following factors when selecting the length of the REPAIR CLAMP:

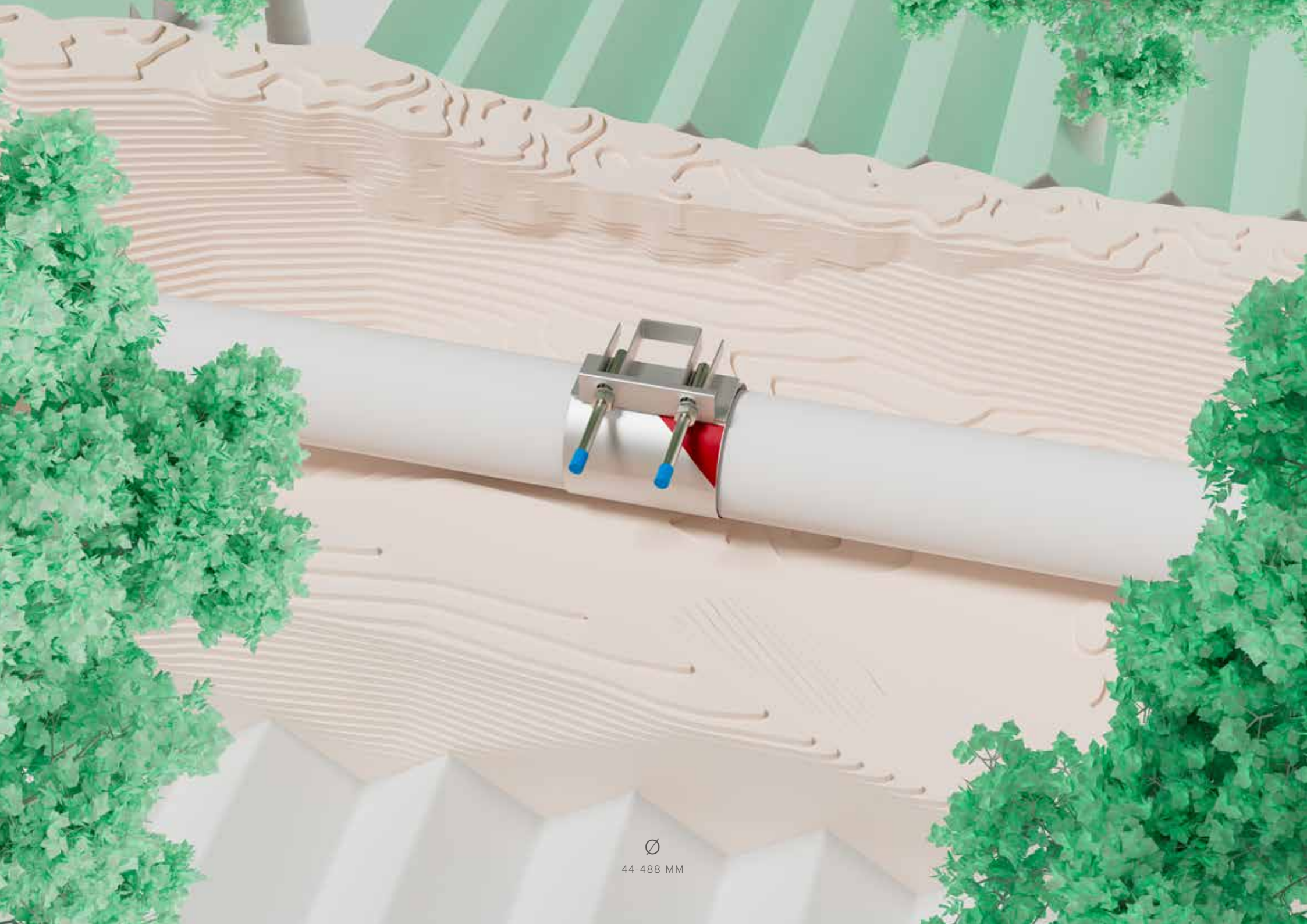
- Pipe diameter
- Operating conditions
- Crack width



To ensure a proper seal, it is recommended that the REPAIR CLAMP covers at least 65 mm on each side of the leak.



i For specific applications or cases where the standard length is not sufficient, we recommend consulting our technical department.



Ø
44-488 MM

Pipe material compatibility

The Arpol REPAIR CLAMP is designed to repair a wide range of pipes with smooth exterior walls, including:



- Ductile iron for wastewater applications (EN 877)



- Ductile iron for potable water applications (EN 545)



- Grey cast iron



- Steel



- Stainless steel



- Copper pipe



- PE-PVC



- GRP



- Concrete



- Asbestos cement



- Asbestos cement (DIN 19800)



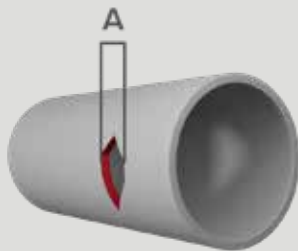
- Clay pipe

Applications

The Arpol REPAIR CLAMP is designed to provide an effective seal.

In situations where surface conditions vary, such as pressure or temperature changes, more flexible and adaptable solutions are needed. We recommend consulting our range of Arpol flexible couplings, designed to provide greater reliability under demanding conditions.

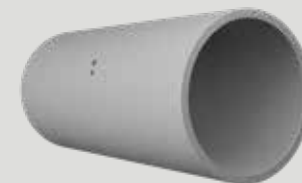
Pipes with cracks



Pipes with minor cracks



Pipes with minor imperfections



44-488 MM

In detail



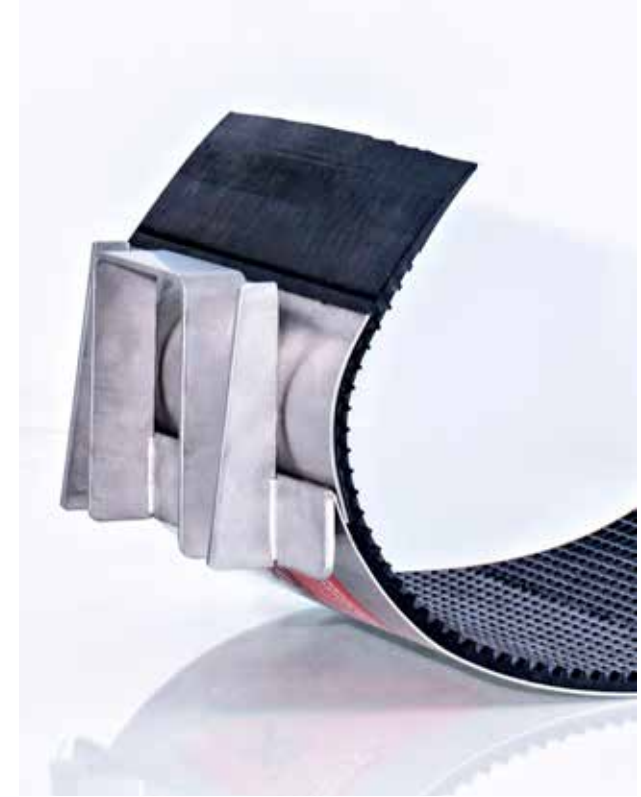
Sealing gasket

The sealing gasket features an optimized waffle-type grid profile that reduces fluid pressure at the leakage area. Arpol has enhanced the traditional waffle design to improve both performance and reliability.



Integrated closing handle

Welded onto the casing, the closing handle facilitates assembly.



Vulcanized spanner plate

Ensures correct positioning during assembly, minimizes leakage risk at the overlap, and guarantees precise installation of the repair clamp.



Single band REPAIR CLAMP

Diameter:

- Outside diameter (OD)
- 44 mm to 270 mm

Pressure range:

- PN16 up to DN200
- PN10 up to DN450

Clamp length:

- 150 mm
- 200 mm

Clamp range:

- Up to 10 mm



Double band REPAIR CLAMP

Diameter:

- Outside diameter (OD)
- 88 mm to 488 mm

Pressure range:

- PN16 up to DN200
- PN10 up to DN450

Clamp length:

- 200 mm
- 300 mm

Clamp range:

- Up to 24 mm



44-488 MM

In-depth

Approvals for drinking water:

—

The Arpol REPAIR CLAMP has approvals for use in **drinking water** applications, with **certifications** such as **DVGW**, **ACS**, and **WRAS**, ensuring its safety and compliance with international standards.

Available configurations:

—

Available with single band (OD 44-270 mm) and double band (OD 88-488 mm), with pressure ranges of PN16 up to DN200 and PN10 up to DN450, meeting different repair requirements.



Additional information

Materials and important details

Body and lug plates:

Stainless steel 1.4307, EN 10088-2 / ASTM A 240 / AISI 304L

Stud bolts:

Stainless steel A2 according to ISO 3506-1.

Washers:

Stainless steel grade A2 according to ISO 3506-2.

Nuts:

Stainless steel A2 according to EN ISO 3506-2, with PTFE coating to prevent galling (cold welding).

Sealing gasket:

EPDM IRHD 60 according to EN 681-1/WA/WC.

Technical specifications

Working pressure (PN):

Water: according to specification table (pages 14-21).

Test pressure:

1.5 X working pressure.

Allowable temperature range:

EPDM: -20 °C to 100 °C





Certifications:

Drinking water approvals:

WRAS BS 6920-1:2014

ACS XP P 41-250

DVGW W270

Quality W4		
	ASTM	EN
Body	304L	1.4307
Nuts	304L	1.4307
Stud bolts	304	1.4301
EPDM sealing gasket		   



44-488 MM

Technical tables

Single band | Length 150 mm |
EPDM | Stainless steel 1.4307/304L

*No minimum order required.

Reference	Range (mm)		Length (mm)	Bands	Stud size	PN
	min.	max.				
RC10 150/44-51 A2E	44	51	150	1	2xM12	16
RC10 150/48-55 A2E	48	55	150	1	2xM12	16
RC10 150/52-59 A2E	52	59	150	1	2xM12	16
RC10 150/57-64 A2E	57	64	150	1	2xM12	16
RC10 150/60-67 A2E	60	67	150	1	2xM12	16
RC10 150/63-70 A2E	63	70	150	1	2xM12	16
RC10 150/67-74 A2E	67	74	150	1	2xM12	16
RC10 150/70-77 A2E	70	77	150	1	2xM12	16
RC10 150/73-80 A2E	73	80	150	1	2xM12	16
RC10 150/75-83 A2E	75	83	150	1	2xM12	16
RC10 150/82-90 A2E	82	90	150	1	2xM12	16
RC10 150/87-97 A2E	87	97	150	1	2xM12	16
RC10 150/95-104 A2E	95	104	150	1	2xM12	16
RC10 150/98-108 A2E	98	108	150	1	2xM12	16
RC10 150/102-112 A2E	102	112	150	1	2xM12	16
RC10 150/106-116 A2E	106	116	150	1	2xM12	16
RC10 150/108-118 A2E	108	118	150	1	2xM12	16
RC10 150/113-123 A2E	113	123	150	1	2xM12	16
RC10 150/118-128 A2E	118	128	150	1	2xM12	16
RC10 150/120-131 A2E	120	131	150	1	2xM12	16

Reference	Range (mm)		Length (mm)	Bands	Stud size	PN
	min.	max.				
RC10 150/125-135 A2E	125	135	150	1	2xM12	16
RC10 150/132-142 A2E	132	142	150	1	2xM12	16
RC10 150/135-145 A2E	135	145	150	1	2xM12	16
RC10 150/139-150 A2E	139	150	150	1	2xM14	16
RC10 150/145-155 A2E	145	155	150	1	2xM14	16
RC10 150/151-161 A2E	151	161	150	1	2xM14	16



44-488 MM

Technical tables

Single band | Length 200 mm |
EPDM | Stainless steel 1.4307/304L

*No minimum order required.

Reference	Range (mm)		Length (mm)	Bands	Stud size	PN
	min.	max.				
RC10 200/44-51 A2E	44	51	200	1	2xM12	16
RC10 200/48-55 A2E	48	55	200	1	2xM12	16
RC10 200/52-59 A2E	52	59	200	1	2xM12	16
RC10 200/57-64 A2E	57	64	200	1	2xM12	16
RC10 200/60-67 A2E	60	67	200	1	2xM12	16
RC10 200/63-70 A2E	63	70	200	1	2xM12	16
RC10 200/67-74 A2E	67	74	200	1	2xM12	16
RC10 200/70-77 A2E	70	77	200	1	2xM12	16
RC10 200/73-80 A2E	73	80	200	1	2xM12	16
RC10 200/75-83 A2E	75	83	200	1	2xM12	16
RC10 200/82-90 A2E	82	90	200	1	2xM12	16
RC10 200/87-97 A2E	87	97	200	1	2xM12	16
RC10 200/95-104 A2E	95	104	200	1	2xM12	16
RC10 200/98-108 A2E	98	108	200	1	2xM12	16
RC10 200/102-112 A2E	102	112	200	1	2xM12	16
RC10 200/106-116 A2E	106	116	200	1	2xM12	16
RC10 200/108-118 A2E	108	118	200	1	2xM12	16
RC10 200/113-123 A2E	113	123	200	1	2xM12	16
RC10 200/118-128 A2E	118	128	200	1	2xM12	16
RC10 200/125-135 A2E	125	135	200	1	2xM12	16

Reference	Range (mm)		Length (mm)	Bands	Stud size	PN
	min.	max.				
RC10 200/132-142 A2E	132	142	200	1	2xM12	16
RC10 200/135-145 A2E	135	145	200	1	2xM12	16
RC10 200/145-155 A2E	145	155	200	1	2xM14	16
RC10 200/151-161 A2E	151	161	200	1	2xM14	16
RC10 200/159-170 A2E	159	170	200	1	2xM14	16
RC10 200/165-175 A2E	165	175	200	1	2xM14	16
RC10 200/168-180 A2E	168	180	200	1	2xM14	16
RC10 200/176-186 A2E	176	186	200	1	2xM14	10
RC10 200/180-191 A2E	180	191	200	1	2xM14	10
RC10 200/186-196 A2E	186	196	200	1	2xM14	10
RC10 200/193-203 A2E	193	203	200	1	2xM14	10
RC10 200/200-210 A2E	200	210	200	1	2xM14	10
RC10 200/209-220 A2E	209	220	200	1	2xM14	10
RC10 200/215-226 A2E	215	226	200	1	2xM14	10
RC10 200/218-230 A2E	218	230	200	1	2xM14	10
RC10 200/222-233 A2E	222	233	200	1	2xM14	10
RC10 200/228-240 A2E	228	240	200	1	2xM14	10
RC10 200/243-253 A2E	243	253	200	1	2xM14	10
RC10 200/252-262 A2E	252	262	200	1	2xM14	10
RC10 200/261-271 A2E	261	271	200	1	2xM14	10



Technical tables

Double band | Length 200 mm |
EPDM | Stainless steel 1.4307/304L

*No minimum order required.

Reference	Range (mm)		Length (mm)	Bands	Stud size	PN
	min.	max.				bar
RC20 200/88-110 A2E	88	110	200	2	2xM12	16
RC20 200/108-128 A2E	108	128	200	2	2xM12	16
RC20 200/112-134 A2E	112	134	200	2	2xM12	16
RC20 200/120-140 A2E	120	140	200	2	2xM12	16
RC20 200/133-155 A2E	133	155	200	2	2xM14	16
RC20 200/138-160 A2E	138	160	200	2	2xM14	16
RC20 200/150-170 A2E	150	170	200	2	2xM14	16
RC20 200/158-180 A2E	158	180	200	2	2xM14	16
RC20 200/165-185 A2E	165	185	200	2	2xM14	16
RC20 200/168-190 A2E	168	190	200	2	2xM14	16
RC20 200/176-196 A2E	176	196	200	2	2xM14	16
RC20 200/190-210 A2E	190	210	200	2	2xM14	10
RC20 200/195-217 A2E	195	217	200	2	2xM14	10
RC20 200/210-230 A2E	210	230	200	2	2xM14	10
RC20 200/216-238 A2E	216	238	200	2	2xM14	10
RC20 200/225-246 A2E	225	246	200	2	2xM14	10
RC20 200/238-260 A2E	238	260	200	2	2xM14	10
RC20 200/250-270 A2E	250	270	200	2	2xM14	10
RC20 200/269-289 A2E	269	289	200	2	2xM16	10
RC20 200/273-293 A2E	273	293	200	2	2xM16	10

Reference	Range (mm)		Length (mm)	Bands	Stud size	PN
	min.	max.				
RC20 200/282-302 A2E	282	302	200	2	2xM16	10
RC20 200/295-315 A2E	295	315	200	2	2xM16	10
RC20 200/317-335 A2E	317	335	200	2	2xM16	10
RC20 200/322-344 A2E	322	344	200	2	2xM16	10
RC20 200/334-354 A2E	334	354	200	2	2xM16	10
RC20 200/337-358 A2E	337	358	200	2	2xM16	10
RC20 200/340-360 A2E	340	360	200	2	2xM16	10
RC20 200/348-368 A2E	348	368	200	2	2xM16	10
RC20 200/365-385 A2E	365	385	200	2	2xM16	10
RC20 200/376-396 A2E	376	396	200	2	2xM16	10
RC20 200/382-402 A2E	382	402	200	2	2xM16	10
RC20 200/390-410 A2E	390	410	200	2	2xM16	10
RC20 200/396-420 A2E	396	420	200	2	2xM16	10
RC20 200/404-424 A2E	404	424	200	2	2xM16	10
RC20 200/410-430 A2E	410	430	200	2	2xM16	10
RC20 200/420-440 A2E	420	440	200	2	2xM16	10
RC20 200/435-455 A2E	435	455	200	2	2xM16	10
RC20 200/440-460 A2E	440	460	200	2	2xM16	10
RC20 200/457-477 A2E	457	477	200	2	2xM16	10
RC20 200/468-488 A2E	468	488	200	2	2xM16	10



Technical tables

Double band | Length 300 mm |
EPDM | Stainless steel 1.4307/304L

*No minimum order required.

Reference	Range (mm)		Length (mm)	Bands	Stud size	PN
	min.	max.				
RC20 300/88-110 A2E	88	110	300	2	3xM14	16
RC20 300/108-128 A2E	108	128	300	2	3xM14	16
RC20 300/112-134 A2E	112	134	300	2	3xM14	16
RC20 300/120-140 A2E	120	140	300	2	3xM14	16
RC20 300/133-155 A2E	133	155	300	2	3xM14	16
RC20 300/138-160 A2E	138	160	300	2	3xM14	16
RC20 300/150-170 A2E	150	170	300	2	3xM14	16
RC20 300/158-180 A2E	158	180	300	2	3xM14	16
RC20 300/165-185 A2E	165	185	300	2	3xM14	16
RC20 300/168-190 A2E	168	190	300	2	3xM14	16
RC20 300/176-196 A2E	176	196	300	2	3xM14	16
RC20 300/190-210 A2E	190	210	300	2	3xM14	10
RC20 300/195-217 A2E	195	217	300	2	3xM14	10
RC20 300/210-230 A2E	210	230	300	2	3xM14	10
RC20 300/216-238 A2E	216	238	300	2	3xM14	10
RC20 300/225-246 A2E	225	246	300	2	3xM14	10
RC20 300/238-260 A2E	238	260	300	2	3xM14	10
RC20 300/250-270 A2E	250	270	300	2	3xM14	10
RC20 300/269-289 A2E	269	289	300	2	3xM16	10
RC20 300/273-293 A2E	273	293	300	2	3xM16	10

Reference	Range (mm)		Length (mm)	Bands	Stud size	PN
	min.	max.				
RC20 300/282-302 A2E	282	302	300	2	3xM16	10
RC20 300/295-315 A2E	295	315	300	2	3xM16	10
RC20 300/317-335 A2E	317	335	300	2	3xM16	10
RC20 300/322-344 A2E	322	344	300	2	3xM16	10
RC20 300/334-354 A2E	334	354	300	2	3xM16	10
RC20 300/337-358 A2E	337	358	300	2	3xM16	10
RC20 300/340-360 A2E	340	360	300	2	3xM16	10
RC20 300/348-368 A2E	348	368	300	2	3xM16	10
RC20 300/365-385 A2E	365	385	300	2	3xM16	10
RC20 300/376-396 A2E	376	396	300	2	3xM16	10
RC20 300/382-402 A2E	382	402	300	2	3xM16	10
RC20 300/390-410 A2E	390	410	300	2	3xM16	10
RC20 300/396-420 A2E	396	420	300	2	3xM16	10
RC20 300/404-424 A2E	404	424	300	2	3xM16	10
RC20 300/410-430 A2E	410	430	300	2	3xM16	10
RC20 300/420-440 A2E	420	440	300	2	3xM16	10
RC20 300/435-455 A2E	435	455	300	2	3xM16	10
RC20 300/440-460 A2E	440	460	300	2	3xM16	10
RC20 300/457-477 A2E	457	477	300	2	3xM16	10
RC20 300/468-488 A2E	468	488	300	2	3xM16	10



Safe and easy to install

The Arpol REPAIR CLAMP is designed to provide a reliable and secure solution for repairs in potable water systems, industrial applications, and other demanding environments. The following instructions will guide you through the installation process to ensure optimal performance.



i Important notes:

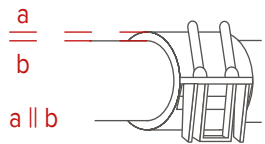
Always follow the manufacturer's instructions.

- Avoid exposing the REPAIR CLAMP to extreme temperatures or aggressive chemicals that could compromise its integrity.
- Before beginning any repair, confirm that you have the correct product for the application.
- For additional information or technical support, please contact Arpol's technical department.



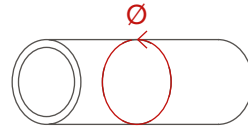
1. Preparing the work area:

Make sure the installation area is clear of any obstacles and clean. Use appropriate personal protective equipment (PPE), such as gloves. Make sure all components of the REPAIR CLAMP are available and ready for installation.



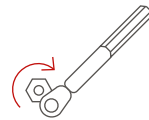
4. Placement:

Position the clamp on the prepared surface, ensuring it is properly aligned with the pipe and fully covers the damaged area. Verify that the ends of the clamp are correctly positioned in relation to the leakage area.



2. Inspection and measurement:

Verify that the pipe's outside diameter falls within the REPAIR CLAMP's specified range.



5. Tightening:

Gradually tighten nuts in a uniform pattern. The recommended torque values are: 65 Nm for M12, 85 Nm for M14, and 110 Nm for M16. This ensures uniform pressure and a secure fit.



3. Surface preparation:

Clean the areas of the pipe that will come into contact with the clamp, removing any dirt, cement, or other contaminants. If necessary, lightly sand the surface to ensure proper contact.



6. Final inspection and adjustments:

Inspect the installation to ensure the REPAIR CLAMP is properly positioned over the leak and securely attached to the pipe. If necessary, adjust the alignment or tighten the nuts to ensure a secure and reliable repair.

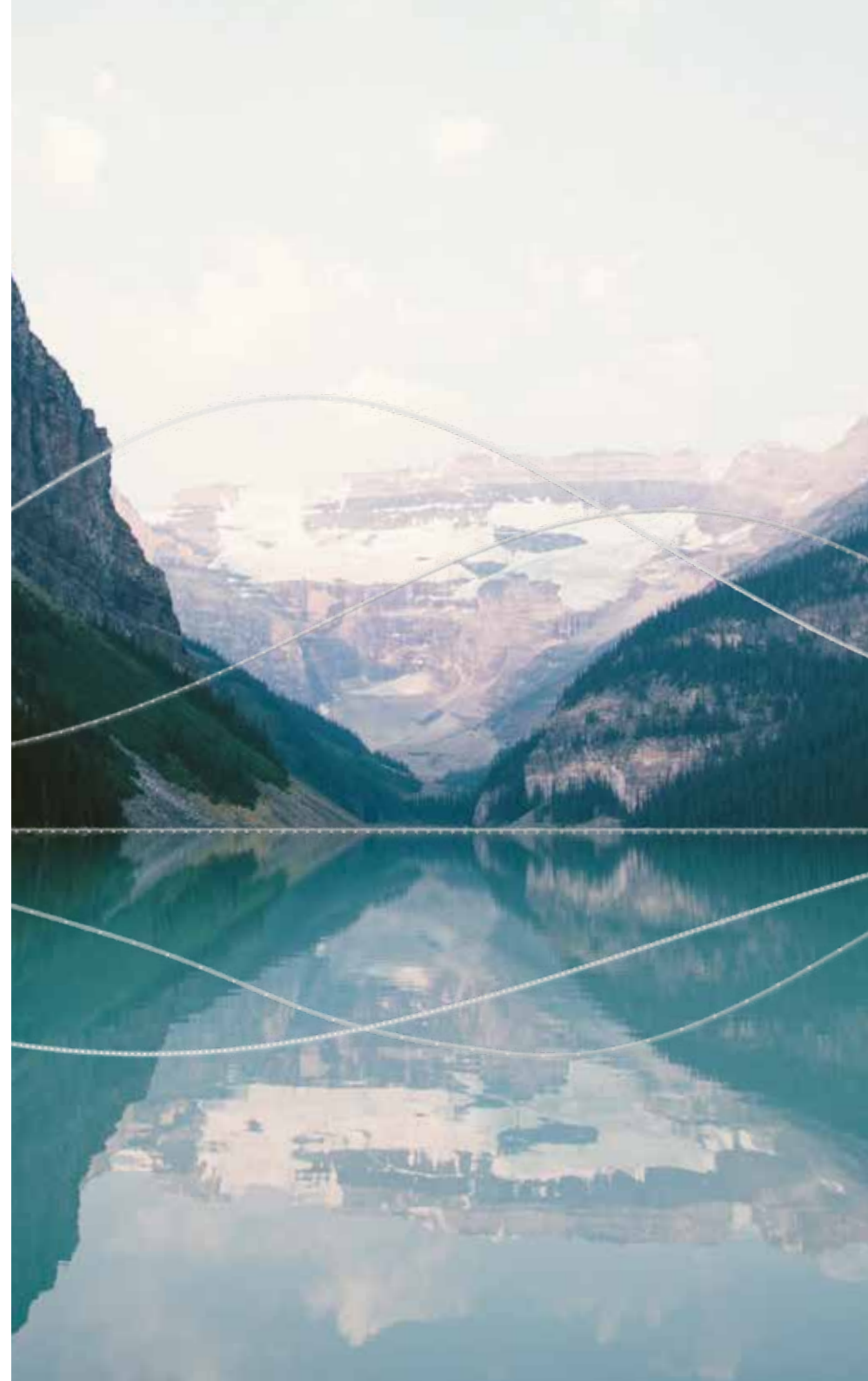


A development plan
for a better future

Innovating for conservation

Our commitment to a **sustainable future** drives us to design **proprietary products** that optimize time and resources, improving the performance and functionality of pipeline systems.

Arpol solutions are designed to simplify pipe **connections and repairs**, with a focus on simplicity and reliability.





Based in Barcelona, we operate globally, adapting to local conditions and complying with **international standards**.

We develop solutions for **water management**, industrial and infrastructure projects, offering technical support and products tailored to each customer's needs. Our **personalized guidance** ensures fast and trouble-free repairs.

With nearly 50 years of experience, we have grown alongside the market, helping thousands of clients maintain their **pipeline networks** in optimal condition. This legacy reflects our commitment to the **planet's sustainability** and to delivering practical and effective solutions.



Connect with Arpol

Discover our range of flexible coupling products

For more technical details about any of our products, please refer to the manuals available for each range:

- Arpol FIX PRO Technical manual
- Arpol NEO Technical manual

Coming soon:

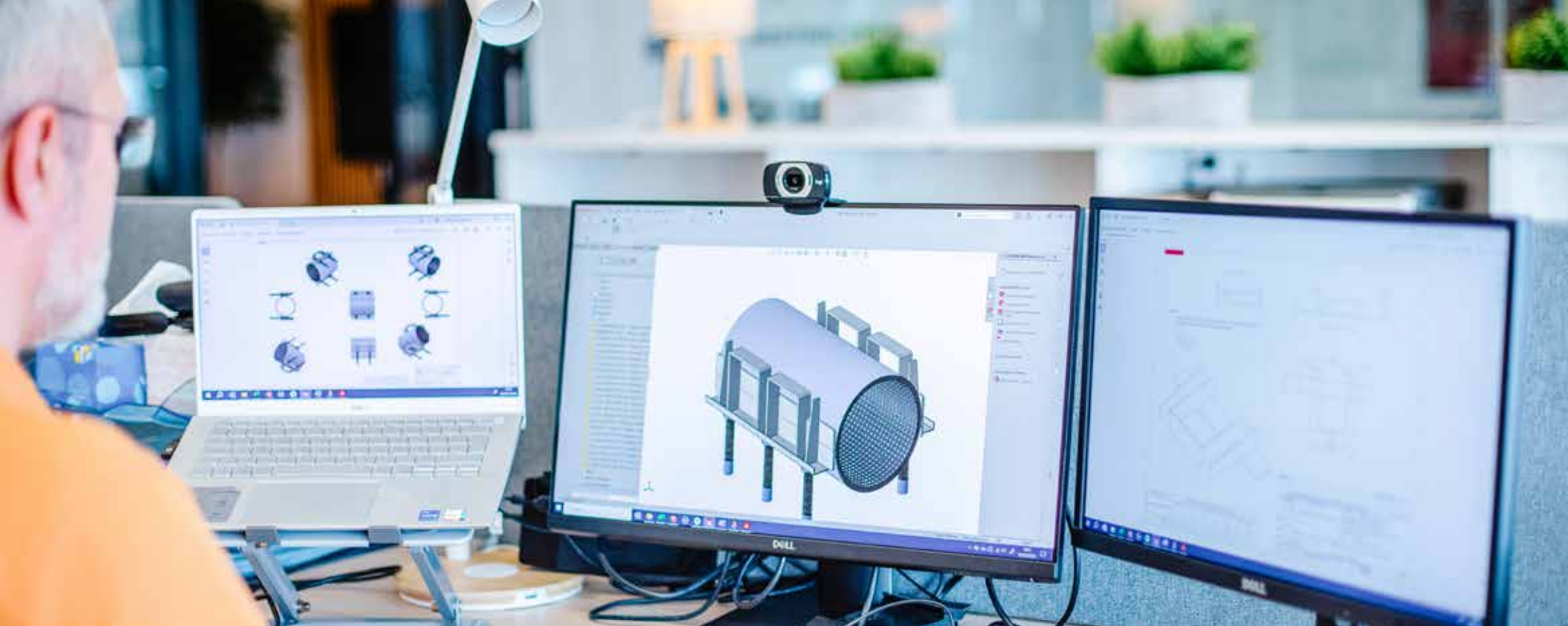
- Arpol INSTAL Technical manual
- Arpol REP Technical manual
- Arpol FIX-U & Arpol MULTI-FIX Technical manual
- Arpol TRANS Technical manual



Remarks

Uniones Arpol, S.A. is not responsible for any potential errors or omissions in this document and reserves the right to make technical or content modifications without prior notice. Uniones Arpol, S.A. holds the rights to this document, including its content and the diagrams included. Any reproduction, disclosure to third parties, or use of its content, in whole or in part, is prohibited without the prior written consent of Uniones Arpol, S.A.

v.20251013



Address

Uniones Arpol S.A. | C/ Rosa dels vents n° 17-23 |
Pol. Ind. La Suïssa | 08338 Premià de Dalt | Barcelona

Phone

+34 93 828 45 05

Web

www.arpol.com

E-mail

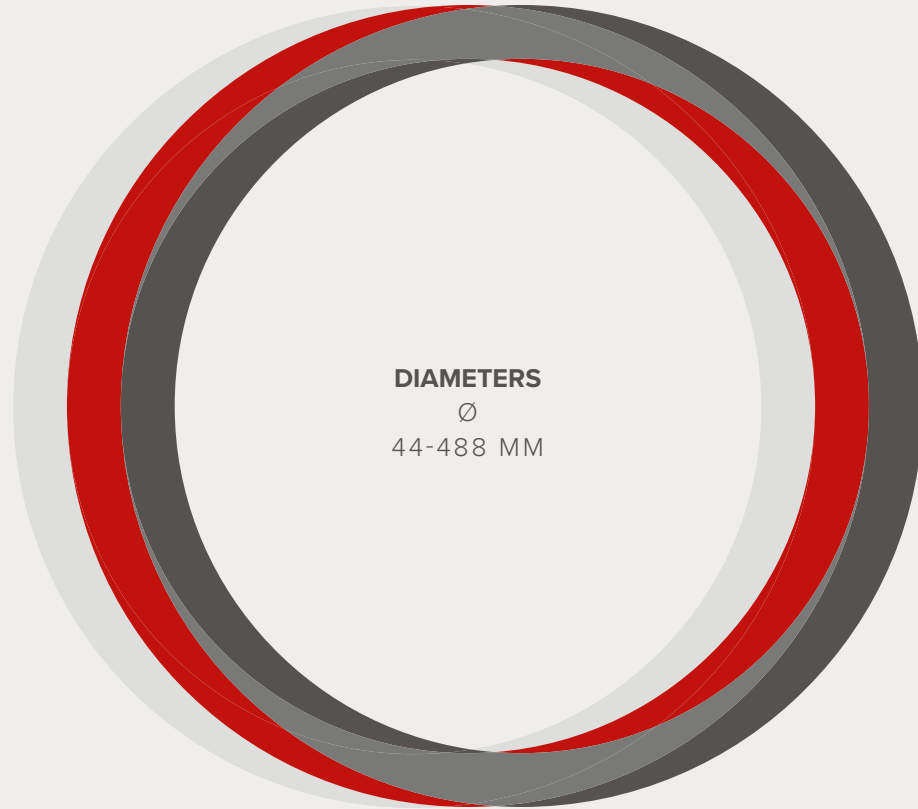
arpol@arpol.com



Install, connect, and repair
at #arpolconnects



44-488 MM



DIAMETERS

∅

44-488 MM



UNIONES ARPOL S.A.

C/Rosa dels vents n° 17-23 | Pol. Ind. La Suïssa | 08338 Premià de Dalt | Barcelona
T. +34 93 828 45 05 | www.arpol.com | arpol@arpol.com

**Because
connecting
matters**

arpol.com