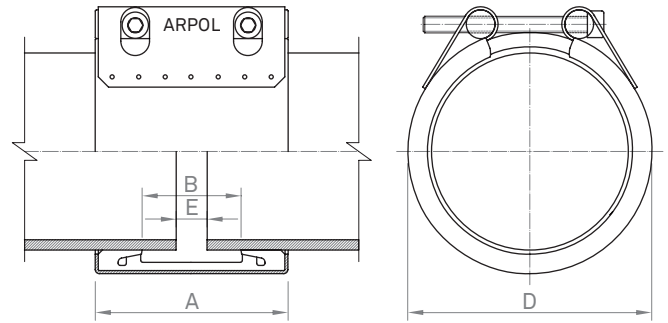


# Nominal width 3.75

## Series IBX

For the correct operation of the coupling, fitting instructions must be respected.  
 Test pressure = 1.5 x PS



	Quality W1		Quality W2		Quality W4		Quality W5	
	AISI	DIN	AISI	DIN	AISI	DIN	AISI	DIN
Casing			304 L	1.4307	304 L	1.4307	316 L	1.4404
Bolts			1035	1.0501	304	1.4301	316 L	1.4401
Bars			1045	1.0503	304 L	1.4307	316 L	1.4404
Inner Steel Bridge (Lock)			304 L	1.4307	304 L	1.4307	316 L	1.4404

Sealing gasket: EPDM / NBR / Silicone

OD	Range	Pressure							Bolts	
		PN psi	PS psi	A in	B in	D in	E <sup>1</sup> in	E <sup>2</sup> in	Diam.	Tor. lbf ft
1.90	1.85 - 1.93	232	652	3.07	1.22	2.65	0.20	0.60	M 8	6
2.13	2.09 - 2.17	232	652	3.07	1.22	2.87	0.20	0.60	M 8	6
2.24	2.20 - 2.28	232	580	3.07	1.22	2.99	0.20	0.60	M 8	6
2.37	2.32 - 2.40	232	580	3.07	1.22	3.12	0.20	0.60	M 8	6
2.48	2.44 - 2.56	232	580	3.07	1.22	3.23	0.20	0.60	M 8	6
3.00	2.91 - 3.03	232	580	3.70	1.77	3.74	0.20	0.60	M 8	6
3.31	3.23 - 3.35	232	435	3.70	1.77	4.06	0.20	0.60	M 8	6
3.50	3.43 - 3.58	232	435	3.74	1.77	4.25	0.20	0.60	M 8	6
4.00	3.94 - 4.10	232	435	3.74	1.77	4.75	0.20	0.60	M 8	8
4.25	4.21 - 4.37	203	435	3.74	1.77	5.00	0.20	0.60	M 8	8
4.50	4.41 - 4.61	188	435	3.74	1.77	5.25	0.20	0.60	M 8	8
4.80	4.76 - 4.84	174	435	3.74	1.77	5.55	0.20	0.60	M 8	8
5.00	5.00 - 5.16	174	290	3.74	1.77	5.75	0.20	0.60	M 8	8
5.24	5.16 - 5.35	159	290	3.74	1.77	5.98	0.20	0.60	M 8	8
5.50	5.39 - 5.59	159	290	3.74	1.77	6.25	0.20	0.60	M 8	8
6.00	5.98 - 6.14	145	290	3.74	1.77	6.75	0.20	0.60	M 8	8
6.25	6.14 - 6.34	145	290	3.74	1.77	7.00	0.20	0.60	M 8	8
6.63	6.54 - 6.73	145	290	3.74	1.77	7.37	0.20	0.60	M 8	8

E<sup>1</sup> Permitted gaps without internal band E<sup>2</sup> Permitted gaps with internal band  
 PN Nominal pressure for the shipbuilding industry with safety factor ≥ 4 PS Working pressure OD Outside Diameter Tor. Torque Value

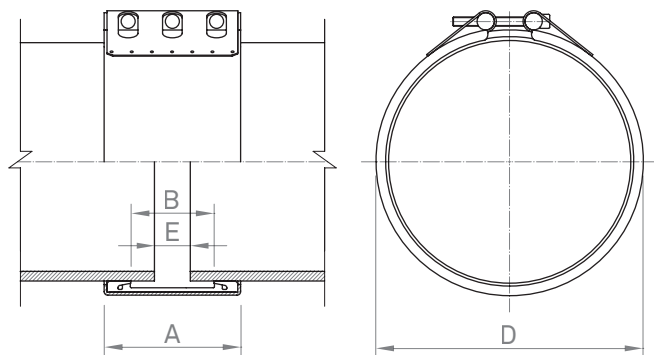
OD	Maximum diameter difference	Maximum angular deflection	Maximum misalignment
in	mil	degrees	mil
1.90	20	4,0	40
2.13 - 2.48	40	4,0	40
3.00 - 104	60	4,0	40
4.50 - 6.00	100	4,0	40
6.25 - 6.63	100	4,0	80

See page 5 (Permitted tolerances)

# Nominal width 5.50

## Series IBY to IFY

For the correct operation of the coupling, fitting instructions must be respected.  
 Test pressure = 1.5 x PS



	IBY	ICY	IDY	IEY	IFY
	in	in	in	in	in
<b>A</b>	5.47	5.51	5.55	5.59	5.67
<b>B</b>	3.39	3.39	3.39	3.39	3.39
<b>D</b>	DE + 0.91	DE + 0.94	DE + 0.98	DE + 1.02	DE + 1.10
<b>E<sup>1</sup></b>	0.40	0.40	0.40	0.40	0.40
<b>E<sup>2</sup></b>	1.40	1.40	1.40	1.40	1.40

	Quality W1		Quality W2		Quality W4		Quality W5	
	AISI	DIN	AISI	DIN	AISI	DIN	AISI	DIN
Casing			304 L	1.4307	304 L	1.4307	316 L	1.4404
Bolts			1035	1.0501	304	1.4301	316	1.4401
Bars			1045	1.0503	304 L	1.4307	316 L	1.4404
Inner Steel Bridge (Lock)			304 L	1.4307	304 L	1.4307	316 L	1.4404

Sealing gasket: EPDM / NBR / Silicone

DN	IBY			ICY			IDY			IEY			IFY			
	in	PS psi	Diam.	Tor. lbf ft	PS psi	Diam.	Tor. lbf ft	PS psi	Diam.	Tor. lbf ft	PS psi	Diam.	Tor. lbf ft	PS psi	Diam.	Tor. lbf ft
6	333	M 10	15	435	M 10	15										
8	262	M 10	15	348	M 10	15	435	M 10	15							
10	217	M 10	15	275	M 10	15	348	M 10	15							
12	174	M 10	20	232	M 10	15	290	M 10	15							
14	159	M 10	25	203	M 10	15	261	M 10	15	304	M 10	15	406	M 12	20	
16	130	M 10	25	188	M 10	15	232	M 10	15	275	M 10	15	362	M 12	20	
18	116	M 10	20	159	M 10	20	203	M 10	20	246	M 12	25	319	M 12	25	
20	116	M 10	25	145	M 10	20	188	M 10	20	217	M 12	25	290	M 12	30	
22	101	M 10	25	130	M 10	25				203	M 12	30	275	M 12	30	
24	87	M 10	25	130	M 10	25				188	M 12	30	246	M 12	30	
26	87	M 10	30	116	M 10	30				174	M 12	35	232	M 12	35	
28	87	M 10	30	101	M 10	30				159	M 12	35	217	M 12	35	
30	72	M 10	30	101	M 10	30				145	M 12	35	203	M 16	45	
32	72	M 10	30	87	M 12	40				145	M 12	40	188	M 16	55	
34				87	M 12	45				130	M 12	45	174	M 16	55	
36				87	M 12	45				130	M 12	45	174	M 16	60	
38				72	M 12	45				116	M 12	45	159	M 16	60	
42				72	M 12	55				116	M 12	55	145	M 16	70	
44				72	M 12	55				101	M 16	70	130	M 16	70	
48				58	M 12	60				101	M 16	75	130	M 16	75	

Nominal diameter serve as guidance of the pressure scale. All measures within the DN range are manufactured.

E<sup>1</sup> Permitted gaps without internal band E<sup>2</sup> Permitted gaps with internal band PS Working pressure DN Nominal Diameter OD Outside Diameter Tor. Torque Value

OD	Maximum diameter difference	Maximum angular deflection	Maximum misalignment
in	mil	degrees	mil
6 - 10	100	2.0	80
10 - 20	100	2.0	120
20 - 48	120	2.0	120

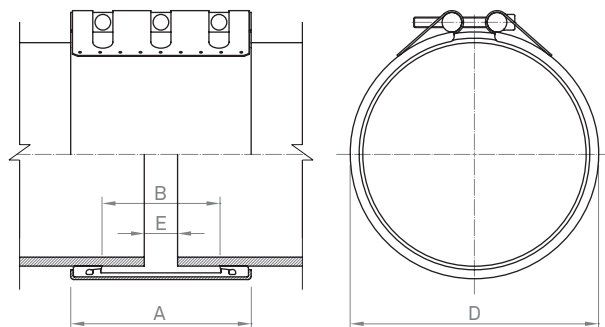
See page 5 (Permitted tolerances)

# Coated nominal width 8.00

## Series AGZ

For the correct operation of the coupling, fitting instructions must be respected.

Test pressure = 1.5 x PS



	AGZ
	in
A	8.11
B	5.50
D	DE + 1.20
E <sup>1</sup>	0.60
E <sup>2</sup>	2.40

	Quality W1		Quality W2		Quality W4		Quality W5	
	AISI	DIN	AISI	DIN	AISI	DIN	AISI	DIN
Casing	1024	1.0570						
Bolts	1035 / 304	1.0501 / 1.4301						
Bars	1045 / 304 L	1.0503 / 1.4307						
Inner Steel Bridge (Lock)	304 L	1.4307						

Sealing gasket: EPDM / NBR / Silicone

OD	AGZ		
in	PS psi	Diam.	Tor. lbf ft
20			
22			
24	420	M 20	45
26	391	M 20	55
28	362	M 20	60
30	333	M 20	60
32	319	M 20	70
34	304	M 20	70
36	275	M 20	75
38	261	M 20	75
42	261	M 20	90
44	232	M 20	90
48	217	M 20	105
52	203	M 20	105
56	188	M 20	120
60	174	M 20	120

Nominal diameter serve as guidance of the pressure scale. All measures within the DN range are manufactured.

E<sup>1</sup> Permitted gaps without internal band E<sup>2</sup> Permitted gaps with internal band PS Working pressure DN Nominal Diameter OD Outside Diameter Tor. Torque Value

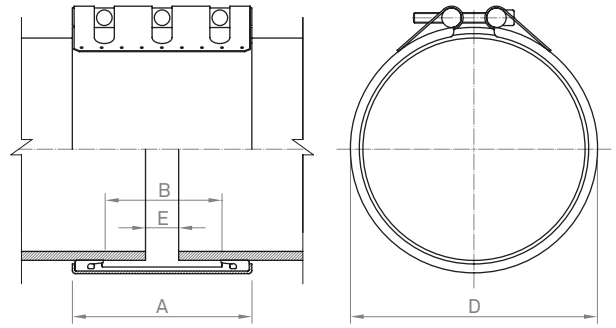
OD	Maximum diameter difference		Maximum angular deflection		Maximum misalignment
	AFZ - AGZ	AHFZ	AFZ - AGZ	AHFZ	AFZ - AGZ
in	mil		degrees		mil
20 - 60	120	2,0	120	1,0	3,0

See page 5 (Permitted tolerances)

# Nominal width 8.00

## Series IBZ to IHFZ

For the correct operation of the coupling, fitting instructions must be respected.  
Test pressure = 1.5 x PS



	IBZ	ICZ	IDZ	IEZ	IFZ	IGZ	IHFZ
	in	in	in	in	in	in	in
A	7.83	7.87	7.91	7.95	8.03	8.11	8.03
B	5.50	5.50	5.50	5.50	5.50	5.50	5.50
D	DE + 0.91	DE + 0.94	DE + 0.98	DE + 1.02	DE + 1.10	DE + 1.20	DE + 2.05
E <sup>1</sup>	0.60	0.60	0.60	0.60	0.60	0.60	0.60
E <sup>2</sup>	2.40	2.40	2.40	2.40	2.40	2.40	2.40

	Quality W1		Quality W2		Quality W4		Quality W5	
	AISI	DIN	AISI	DIN	AISI	DIN	AISI	DIN
Casing			304 L	1.4307	304 L	1.4307	316 L	1.4404
Bolts			1035	1.0501	304	1.4301	316	1.4401
Bars			1045	1.0503	304 L	1.4307	316 L	1.4404
Inner Steel Bridge (Lock)			304 L	1.4307	304 L	1.4307	316 L	1.4404

Sealing gasket: EPDM / NBR / Silicone

DN	IBZ			ICZ			IDZ			IEZ			IFZ			IGZ			IHFZ		
in	PS psi	Diam.	Tor. lbf ft	PS psi	Diam.	Tor. lbf ft	PS psi	Diam.	Tor. lbf ft	PS psi	Diam.	Tor. lbf ft	PS psi	Diam.	Tor. lbf ft	PS psi	Diam.	Tor. lbf ft	PS psi	Diam.	Tor. lbf ft
6	333	M 12	20	30	M 12	15															
8	261	M 12	20	24	M 12	20	435	M 12	15												
10	217	M 12	25	19	M 12	20	348	M 12	15												
12	174	M 12	30	16	M 12	25	290	M 12	15												
14	159	M 12	35	14	M 12	25	261	M 12	20	304	M 12	20	406	M 16	25						
16	130	M 12	35	13	M 12	20	232	M 12	25	275	M 12	20	362	M 16	45						
18	116	M 12	45	11	M 12	25	203	M 12	25	246	M 12	25	319	M 16	30						
20	116	M 12	45	10	M 12	30	188	M 12	30	217	M 12	25	290	M 16	30						
22	101	M 12	35	9	M 12	30				203	M 16	35	275	M 16	35						
24	87	M 12	35	9	M 12	30				188	M 16	40	246	M 16	40	304	M 20	45	391	M 20	55
26	87	M 12	40	8	M 12	35				174	M 16	45	232	M 16	45	290	M 20	55	362	M 20	55
28	87	M 12	45	7	M 12	35				159	M 16	45	217	M 16	45	261	M 20	55	348	M 20	60
30	72	M 12	45	7	M 12	35				145	M 16	45	203	M 16	45	246	M 20	60	319	M 20	60
32	72	M 12	50	6	M 12	40				145	M 16	55	188	M 16	55	232	M 20	70	290	M 20	70
34				6	M 12	45				130	M 16	55	174	M 16	55	217	M 20	70	275	M 20	70
36				6	M 12	45				130	M 16	60	174	M 16	60	203	M 20	75	275	M 20	75
38				5	M 12	45				116	M 16	60	159	M 16	60	203	M 20	75	246	M 20	75
42				5	M 12	55				116	M 16	70	145	M 16	70	188	M 20	90	232	M 20	90
44				5	M 16	70				101	M 16	70	130	M 16	70	174	M 20	90	217	M 20	90
48				4	M 16	75				101	M 16	75	130	M 16	75	159	M 20	90	203	M 20	105
52										87	M 16	90	116	M 16	90	145	M 20	105	188	M 20	105
56										87	M 16	90	101	M 16	90	130	M 20	120	174	M 20	120
60										72	M 16	105	101	M 16	105	130	M 20	120	159	M 20	120

Nominal diameter serve as guidance of the pressure scale. All measures within the DN range are manufactured.

E<sup>1</sup> Permitted gaps without internal band E<sup>2</sup> Permitted gaps with internal band PS Working pressure DN Nominal Diameter OD Outside Diameter Tor. Torque Value

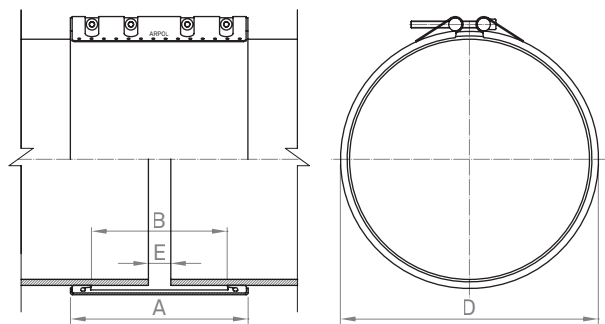
OD	Maximum diameter difference		Maximum angular deflection		Maximum misalignment	
	IBZ - IGZ	IHFZ	IBZ - IGZ	IHFZ	IBZ - IGZ	IHFZ
in	mil		degrees		mil	
6 - 10	100		2,0		80	
10 - 20	100		2,0		120	
20 - 60	120	80	2,0	1,0	120	80

See page 5 (Permitted tolerances)

# Coated nominal width 12.00

## Series AGW

For the correct operation of the coupling, fitting instructions must be respected.  
Test pressure = 1.5 x PS



	AGW
	in
A	11.85
B	9.05
D	DE + 110
E <sup>1</sup>	0.60
E <sup>2</sup>	3.20

	Quality W1		Quality W2		Quality W4		Quality W5	
	AISI	DIN	AISI	DIN	AISI	DIN	AISI	DIN
Casing	1024	1.0570						
Bolts	1035 / 304	1.0501 / 1.4301						
Bars	1045 / 304 L	1.0503 / 1.4307						
Inner Steel Bridge (Lock)	304 L	1.4307						

Sealing gasket: EPDM

DN	PS	AGW	Tor.
in	psi	Diam.	lbf ft
20			
22			
24	420	M 20	40
26	391	M 20	45
28	362	M 20	45
30	333	M 20	45
32	319	M 20	55
34	304	M 20	55
36	275	M 20	55
38	261	M 20	60
42	261	M 20	60
44	232	M 20	70
48	217	M 20	75
52	203	M 20	75
56	188	M 20	90
60	174	M 20	90

Nominal Diameter serve as guidance of the pressure scale. All measures within the DN range are manufactured.

E<sup>1</sup> Permitted gaps without internal band E<sup>2</sup> Permitted gaps with internal band PS Working pressure DN Nominal Diameter OD Outside Diameter Tor. Torque Value

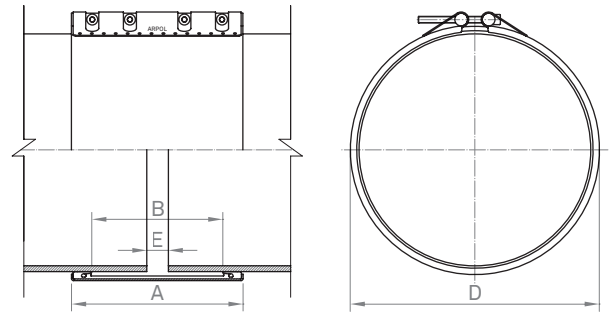
OD	Maximum diameter difference	Maximum angular deflection	Maximum misalignment
in	AFW - AGW mil	AFW - AGW degrees	AFW - AGW mil
20 - 60	120	2,0	120

See page 5 (Permitted tolerances)

# Nominal width 12.00

## Series IBW a IHGW

For the correct operation of the coupling, fitting instructions must be respected.  
 Test pressure = 1.5 x PS



	IBW	ICW	IDW	IEW	IFW	IGW	IHFW	IHW
	in	in	in	in	in	in	in	in
<b>A</b>	11.57	11.61	11.65	11.69	11.77	11.85	11.77	11.85
<b>B</b>	9.05	9.05	9.05	9.05	9.05	9.05	9.05	9.05
<b>D</b>	DE + 0.91	DE + 0.94	DE + 0.98	DE + 1.02	DE + 1.10	DE + 1.20	DE + 2.05	DE + 2.20
<b>E<sup>1</sup></b>	0.60	0.60	0.60	0.60	0.60	0.60	0.60	0.60
<b>E<sup>2</sup></b>	320	320	320	320	320	320	320	320

	Quality W1		Quality W2		Quality W4		Quality W5	
	AISI	DIN	AISI	DIN	AISI	DIN	AISI	DIN
Casing			304 L	1.4307	304 L	1.4307	316 L	1.4404
Bolts			1035	1.0501	304	1.4301	316	1.4401
Bars			1045	1.0503	304 L	1.4307	316 L	1.4404
Inner Steel Bridge (Lock)			304 L	1.4307	304 L	1.4307	316 L	1.4404

Sealing gasket: EPDM

DN	IBW			ICW			IDW			IEW			IFW			IGW			IHFW			IHW		
	in	PS psi	Diam. Tor. lbf ft	PS psi	Diam. Tor. lbf ft	PS psi	Diam. Tor. lbf ft	PS psi	Diam. Tor. lbf ft	PS psi	Diam. Tor. lbf ft	PS psi	Diam. Tor. lbf ft	PS psi	Diam. Tor. lbf ft	PS psi	Diam. Tor. lbf ft	PS psi	Diam. Tor. lbf ft	PS psi	Diam. Tor. lbf ft	PS psi	Diam. Tor. lbf ft	
12	174	M 12	15	16	M 12	15	290	M 12	15															
14	159	M 12	15	14	M 12	15	261	M 12	15	304	M 16	20	406	M 16	20									
16	130	M 12	15	13	M 12	15	232	M 12	15	275	M 16	25	362	M 16	25									
18	116	M 12	20	11	M 12	20	203	M 12	20	246	M 16	25	319	M 16	25									
20	116	M 12	20	10	M 12	20	188	M 12	20	217	M 16	30	290	M 16	30									
22	101	M 12	25	9	M 12	25				203	M 16	30	275	M 16	30									
24	87	M 12	25	9	M 12	25				188	M 16	30	246	M 16	30	304	M 20	30	391	M 20	45	493	M 20	45
26	87	M 12	25							174	M 16	35	232	M 16	35	290	M 20	45	362	M 20	45	464	M 20	45
28	87	M 12	30							159	M 16	35	217	M 16	35	261	M 20	45	333	M 20	55	420	M 24	60
30	72	M 12	30							145	M 16	40	203	M 16	40	246	M 20	45	319	M 20	55	391	M 24	60
32	72	M 12	30							145	M 16	40	188	M 16	40	232	M 20	55	290	M 20	55	377	M 24	70
34										130	M 16	45	174	M 16	45	217	M 20	55	275	M 20	60	348	M 24	70
36										130	M 16	45	174	M 16	45	203	M 20	55	261	M 20	60	333	M 24	75
38										116	M 16	45	159	M 16	45	203	M 20	60	246	M 20	70	319	M 24	75
42										116	M 16	55	145	M 16	55	188	M 20	60	232	M 20	70	304	M 24	90
44										101	M 16	55	130	M 16	55	174	M 20	70	217	M 20	75	275	M 24	90
48										101	M 16	60	130	M 20	75	159	M 20	75	203	M 20	90	246	M 24	105
52										87	M 16	60	116	M 20	75	145	M 20	75	188	M 20	90	232	M 24	105
56										87	M 16	70	101	M 20	90	130	M 20	90	174	M 20	90	217	M 24	120
60										72	M 16	75	101	M 20	90	130	M 20	90	159	M 20	105	203	M 24	120

Nominal diameter serve as guidance of the pressure scale. All measures within the DN range are manufactured.

E<sup>1</sup> Permitted gaps without internal band E<sup>2</sup> Permitted gaps with internal band PS Working pressure DN Nominal Diameter OD Outside Diameter Tor. Torque Value

OD	Maximum diameter difference		Maximum angular deflection		Maximum misalignment	
	IBW - IGW	IHFW - IHGW	IBW - IGW	IHFW - IHGW	IBW - IGW	IHFW - IHGW
in	mil		degrees		mil	
12 - 60	100		2,0		120	
20 - 60	120	80	2,0	1,0	120	80

See page 5 (Permitted tolerances)