

INSTAL.

Connection.

Flexible couplings for pipe connection.



BECAUSE CONNECTING MATTERS



Index

Instal

flexible
couplings
for pipe
connections

- 3 Nominal width 95
- 4 Nominal width 140
- 5 Nominal width 200
- 6 Coated nominal width 200
- 7 Nominal width 300
- 8 Coated nominal width 300
- 9 Applications

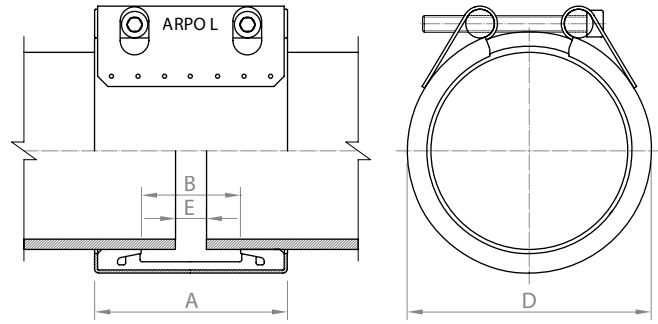
Serie IBX
Series IBY to IFY
Series IBZ to IHFZ
Serie AGZ
Series IBW to IHGW
Serie AGW

Nominal width 95

Serie IBX

To ensure correct operation, Fitting instructions must be respected.

Test pressure = 1.5 x PS



	Quality W1		Quality W2		Quality W4		Quality W5	
	AISI	DIN	AISI	DIN	AISI	DIN	AISI	DIN
Casing			304 L	1.4307	304 L	1.4307	316	1.4404
Bolts			1035	1.0501	304	1.4301	316	1.4401
Bars			1045	1.0503	304 L	1.4307	316	1.4404
Inner steel band (Lock)			304 L	1.4307	304 L	1.4307	316	1.4404

Sealing gasket: EPDM / NBR / Silicone

OD		Pressure				Bolts				
mm	mm	PN bar	PS bar	A mm	B mm	D mm	E ¹ mm	E ² mm	Diam.	Tor. Nm
48,3	47 - 49	16	45	78	31	67,3	5	15	M 8	7
54,0	53 - 55	16	45	78	31	73,0	5	15	M 8	7
57,0	56 - 58	16	40	78	31	76,0	5	15	M 8	7
60,3	59 - 61	16	40	78	31	79,3	5	15	M 8	7
63,0	62 - 65	16	40	78	31	82,0	5	15	M 8	7
76,1	74 - 77	16	30	94	45	98,1	5	15	M 8	7
84,0	82 - 85	16	30	94	45	106,0	5	15	M 8	7
88,9	87 - 91	16	30	95	45	110,9	5	15	M 8	7
104,0	102 - 106	16	30	95	45	126,0	5	15	M 8	10
108,0	107 - 111	14	30	95	45	130,0	5	15	M 8	10
114,3	112 - 117	13	30	95	45	136,3	5	15	M 8	10
125,0	124 - 127	12	20	95	45	147,0	5	15	M 8	10
129,0	127 - 131	12	20	95	45	151,0	5	15	M 8	10
133,0	131 - 136	11	20	95	45	155,0	5	15	M 8	10
139,7	137 - 142	11	20	95	45	161,7	5	15	M 8	10
154,0	152 - 156	10	20	95	45	176,0	5	15	M 8	10
159,0	156 - 161	10	20	95	45	181,0	5	15	M 8	10
168,3	166 - 171	10	20	95	45	190,3	5	15	M 8	10

E¹ Permitted gaps without internal band E² Permitted gaps with internal band

PN Shipbuilding industry safety factor ≥ 4 PS Working pressure OD Outside Diameter Tor. Torque Value

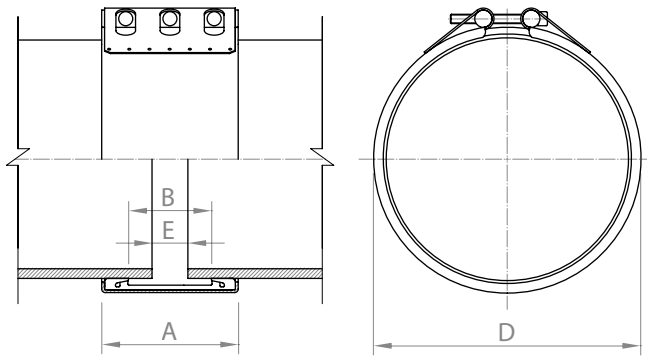
OD	Maximum diameter difference	Maximum angular deflection	Maximum misalignment
mm	mm	degrees	mm
48,3	0,5	4,0	1,0
54 - 63	1,0	4,0	1,0
76,1 - 104	1,5	4,0	1,0
108 - 154	2,5	4,0	1,0
159 - 168,3	2,5	4,0	2,0

See page 7 (Permitted tolerances)

Nominal width 140

Series IBY to IFY

To ensure correct operation, Fitting instructions must be respected.
Test pressure = 1.5 x PS



	IBY	ICY	IDY	IEY	IFY
	mm	mm	mm	mm	mm
A	139	140	141	142	144
B	86	86	86	86	86
D	DE + 23	DE + 24	DE + 25	DE + 26	DE + 28
E¹	10	10	10	10	10
E²	35	35	35	35	35

	Quality W1		Quality W2		Quality W4		Quality W5	
	AISI	DIN	AISI	DIN	AISI	DIN	AISI	DIN
Casing			304 L	1.4307	304 L	1.4307	316 L	1.4404
Bolts			1035	1.0501	304	1.4301	316	1.4401
Bars			1045	1.0503	304 L	1.4307	316 L	1.4404
Inner steel band (Lock)			304 L	1.4307	304 L	1.4307	316 L	1.4404

Sealing gasket: EPDM / NBR / Silicone

DN	IBY			ICY			IDY			IEY			IFY		
	PS bar	Diam.	Tor. Nm	PS bar	Diam.	Tor. Nm	PS bar	Diam.	Tor. Nm	PS bar	Diam.	Tor. Nm	PS bar	Diam.	Tor. Nm
150	23	M 10	20	30	M 10	20									
200	18	M 10	20	24	M 10	20	30	M 10	20						
250	15	M 10	20	19	M 10	20	24	M 10	20						
300	12	M 10	25	16	M 10	20	20	M 10	20						
350	11	M 10	30	14	M 10	20	18	M 10	20	21	M 10	20	28	M 12	25
400	9	M 10	30	13	M 10	20	16	M 10	20	19	M 10	20	25	M 12	25
450	8	M 10	25	11	M 10	25	14	M 10	25	17	M 12	30	22	M 12	30
500	8	M 10	30	10	M 10	25	13	M 10	25	15	M 12	30	20	M 12	35
550	7	M 10	30	9	M 10	30				14	M 12	35	19	M 12	35
600	6	M 10	30	9	M 10	30				13	M 12	35	17	M 12	35
650	6	M 10	35	8	M 10	35				12	M 12	45	16	M 12	45
700	6	M 10	35	7	M 10	35				11	M 12	45	15	M 12	45
750	5	M 10	40	7	M 10	40				10	M 12	45	14	M 16	60
800	5	M 10	40	6	M 12	50				10	M 12	50	13	M 16	70
850				6	M 12	60				9	M 12	60	12	M 16	70
900				6	M 12	60				9	M 12	60	12	M 16	80
950				5	M 12	60				8	M 12	60	11	M 16	80
1000				5	M 12	70				8	M 12	70	10	M 16	90
1100				5	M 12	70				7	M 16	90	9	M 16	90
1200				4	M 12	80				7	M 16	100	9	M 16	100

Nominal diameter serve as guidance of the pressure scale. Measures in between DN range can be manufactured.

E¹ Permitted gaps without internal band E² Permitted gaps with internal band PS Working pressure DN Nominal Diameter OD Outside Diameter Tor. Torque Value

OD	Maximum diameter difference	Maximum angular deflection	Maximum misalignment
mm	mm	degrees	mm
150 - 250	2,5	2,0	2,0
250 - 500	2,5	2,0	3,0
500 - 1200	3,0	2,0	3,0

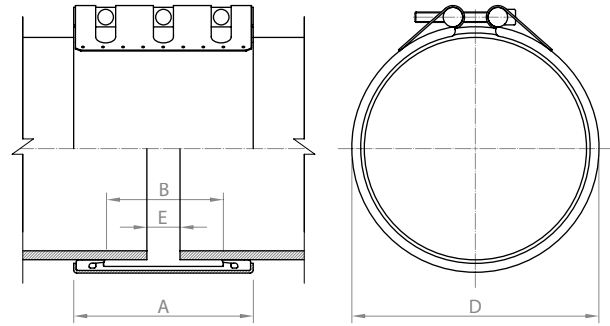
See page 7 (Permitted tolerances)

Nominal width 200

Series IBZ to IHFZ

To ensure correct operation, Fitting instructions must be respected.

Test pressure = 1.5 x PS



	IBZ	ICZ	IDZ	IEZ	IFZ	IGZ	IHFZ
	mm	mm	mm	mm	mm	mm	mm
A	199	200	201	202	204	206	204
B	142	142	142	142	142	142	142
D	DE + 23	DE + 24	DE + 25	DE + 26	DE + 28	DE + 30	DE + 52
E¹	15	15	15	15	15	15	15
E²	60	60	60	60	60	60	60

	Quality W1		Quality W2		Quality W4		Quality W5	
	AISI	DIN	AISI	DIN	AISI	DIN	AISI	DIN
Casing			304 L	1.4307	304 L	1.4307	316 L	1.4404
Bolts			1035	1.0501	304	1.4301	316	1.4401
Bars			1045	1.0503	304 L	1.4307	316 L	1.4404
Inner steel band (Lock)			304 L	1.4307	304 L	1.4307	316 L	1.4404

Sealing gasket: EPDM / NBR / Silicone

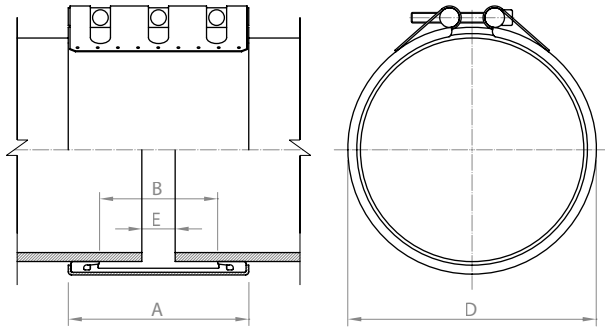
DN	IBZ		ICZ			IDZ		IEZ		IFZ		IGZ			IHFZ						
	PS bar	Diam.	Tor. Nm	PS bar	Diam.	Tor. Nm	PS bar	Diam.	Tor. Nm	PS bar	Diam.	Tor. Nm	PS bar	Diam.	Tor. Nm	PS bar	Diam.	Tor. Nm			
150	23	M 12	20	30	M 12	20															
200	18	M 12	25	24	M 12	25	30	M 12	20												
250	15	M 12	25	19	M 12	25	24	M 12	20												
300	12	M 12	30	16	M 12	30	20	M 12	20												
350	11	M 12	35	14	M 12	30	18	M 12	25	21	M 12	25	28	M 16	30						
400	9	M 12	35	13	M 12	25	16	M 12	30	19	M 12	25	25	M 16	60						
450	8	M 12	45	11	M 12	30	14	M 12	30	17	M 12	30	22	M 16	40						
500	8	M 12	45	10	M 12	35	13	M 12	35	15	M 12	30	20	M 16	40						
550	7	M 12	35	9	M 12	35				14	M 16	45	19	M 16	45						
600	6	M 12	35	9	M 12	35				13	M 16	50	17	M 16	50	21	M 20	60	27	M 20	70
650	6	M 12	40	8	M 12	45				12	M 16	60	16	M 16	60	20	M 20	70	25	M 20	80
700	6	M 12	45	7	M 12	45				11	M 16	60	15	M 16	60	18	M 20	70	24	M 20	80
750	5	M 12	45	7	M 12	45				10	M 16	60	14	M 16	60	17	M 20	80	22	M 20	80
800	5	M 12	50	6	M 12	50				10	M 16	70	13	M 16	70	16	M 20	90	20	M 20	90
850				6	M 12	60				9	M 16	70	12	M 16	70	15	M 20	90	19	M 20	90
900				6	M 12	60				9	M 16	80	12	M 16	80	14	M 20	100	19	M 20	100
950				5	M 12	60				8	M 16	80	11	M 16	80	14	M 20	100	17	M 20	100
1000				5	M 12	70				8	M 16	90	10	M 16	90	13	M 20	120	16	M 20	110
1100				5	M 16	90				7	M 16	90	9	M 16	90	12	M 20	120	15	M 20	120
1200				4	M 16	100				7	M 16	100	9	M 16	10	11	M 20	140	14	M 20	140
1300										6	M 16	120	9	M 16	120	10	M 20	140	13	M 20	140
1400										6	M 16	120	7	M 16	120	9	M 20	160	12	M 20	160
1500										5	M 16	140	7	M 16	140	9	M 20	160	11	M 20	160

Nominal diameter serve as guidance of the pressure scale. Measures in between DN range can be manufactured.

E¹ Permitted gaps without internal band E² Permitted gaps with internal band PS Working pressure DN Nominal Diameter OD Outside Diameter Tor. Torque Value

OD	Maximum diameter difference		Maximum angular deflection		Maximum misalignment	
	IBZ - IGZ	IHFZ	IBZ - IGZ	IHFZ	IBZ - IGZ	IHFZ
mm	mm		degrees		mm	
150 - 250	2,5		2,0		2,0	
250 - 500	2,5		2,0		3,0	
500 - 1500	3,0	2,0	2,0	1,0	3,0	2,0

See page 7 (Permitted tolerances)



Coated nominal width 200

Serie AGZ

To ensure correct operation, Fitting instructions must be respected.

Test pressure = 1.5 x PS

AGZ	
mm	
A	206
B	142
D	DE + 30
E ¹	15
E ²	60

	Quality W1		Quality W2		Quality W4		Quality W5	
	AISI	DIN	AISI	DIN	AISI	DIN	AISI	DIN
Casing	1024	1.0570						
Bolts	1035 / 304	1.0501 / 1.4301						
Bars	1045 / 304 L	1.0503 / 1.4307						
Inner steel band (Lock)	304 L	1.4307						

Sealing gasket: EPDM/NBR/Silicone

OD	AGZ		
	PS bar	Diam.	Tor. Nm
600	29	M 20	60
650	27	M 20	70
700	25	M 20	80
750	23	M 20	80
800	22	M 20	90
850	21	M 20	90
900	19	M 20	100
950	18	M 20	100
1000	18	M 20	120
1100	16	M 20	120
1200	15	M 20	140
1300	14	M 20	140
1400	13	M 20	160

Nominal diameter serve as guidance of the pressure scale. Measures in between DN range can be manufactured.

E¹ Permitted gaps without internal band E² Permitted gaps with internal band PS Working pressure DN Nominal Diameter OD Outside Diameter Tor. Torque Value

OD	Maximum diameter difference	Maximum angular deflection	Maximum misalignment
mm	mm	degrees	mm
500 - 1500	3,0	2,0	3,0

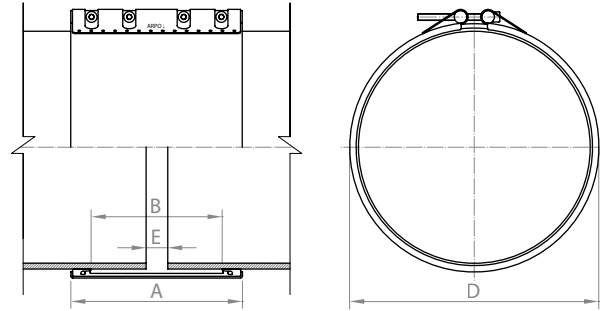
See page 7 (Permitted tolerances)

Nominal width 300

Series IBW a IHGW

To ensure correct operation, Fitting instructions must be respected.

Test pressure = 1.5 x PS



	IBW	ICW	IDW	IEW	IFW	IGW	IHFW	IHGW
	mm	mm	mm	mm	mm	mm	mm	mm
A	294	295	296	297	299	301	299	301
B	230	230	230	230	230	230	230	230
D	DE + 23	DE + 24	DE + 25	DE + 26	DE + 28	DE + 30	DE + 52	DE + 56
E¹	15	15	15	15	15	15	15	15
E²	80	80	80	80	80	80	80	80

	Quality W1		Quality W2		Quality W4		Quality W5	
	AISI	DIN	AISI	DIN	AISI	DIN	AISI	DIN
Casing			304 L	1.4307	304 L	1.4307	316 L	1.4404
Bolts			1035	1.0501	304	1.4301	316	1.4401
Bars			1045	1.0503	304 L	1.4307	316 L	1.4404
Inner steel band (Lock)			304 L	1.4307	304 L	1.4307	316 L	1.4404

Sealing gasket: EPDM

DN	IBW			ICW			IDW			IEW			IFW			IGW			IHFW			IHGW			
	PS bar	Diam.	Tor. Nm	PS bar	Diam.	Tor. Nm	PS bar	Diam.	Tor. Nm	PS bar	Diam.	Tor. Nm	PS bar	Diam.	Tor. Nm	PS bar	Diam.	Tor. Nm	PS bar	Diam.	Tor. Nm	PS bar	Diam.	Tor. Nm	
300	12	M 12	15	16	M 12	15	20	M 12	15																
350	11	M 12	20	14	M 12	20	18	M 12	20	21	M 16	25	28	M 16	25										
400	9	M 12	20	13	M 12	20	16	M 12	20	19	M 16	30	25	M 16	30										
450	8	M 12	25	11	M 12	25	14	M 12	25	17	M 16	30	22	M 16	30										
500	8	M 12	25	10	M 12	25	13	M 12	25	15	M 16	35	20	M 16	35										
550	7	M 12	30	9	M 12	30				14	M 16	35	19	M 16	35										
600	6	M 12	30	9	M 12	30				13	M 16	40	17	M 16	40	21	M 20	40	27	M 20	60	34	M 24	60	
650	6	M 12	30							12	M 16	45	16	M 16	45	20	M 20	60	25	M 20	60	32	M 24	60	
700	6	M 12	35							11	M 16	45	15	M 16	45	18	M 20	60	23	M 20	70	29	M 24	80	
750	5	M 12	35							10	M 16	50	14	M 16	50	17	M 20	60	22	M 20	70	27	M 24	80	
800	5	M 12	40							10	M 16	50	13	M 16	50	16	M 20	70	20	M 20	70	26	M 24	90	
850										9	M 16	60	12	M 16	60	15	M 20	70	19	M 20	80	24	M 24	90	
900										9	M 16	60	12	M 16	60	14	M 20	70	18	M 20	80	23	M 24	100	
950										8	M 16	60	11	M 16	60	14	M 20	80	17	M 20	90	22	M 24	100	
1000										8	M 16	70	10	M 16	70	13	M 20	80	16	M 20	90	21	M 24	120	
1100										7	M 16	70	9	M 16	70	12	M 20	90	15	M 20	100	19	M 24	120	
1200										7	M 16	80	9	M 20	100	11	M 20	100	14	M 20	120	17	M 24	140	
1300										6	M 16	80	8	M 20	100	10	M 20	100	13	M 20	120	16	M 24	140	
1400										6	M 16	90	7	M 20	120	9	M 20	120	12	M 20	120	15	M 24	160	
1500										5	M 16	100	7	M 20	120	9	M 20	120	11	M 20	140	14	M 24	160	

Nominal diameter serve as guidance of the pressure scale. Measures in between DN range can be manufactured.

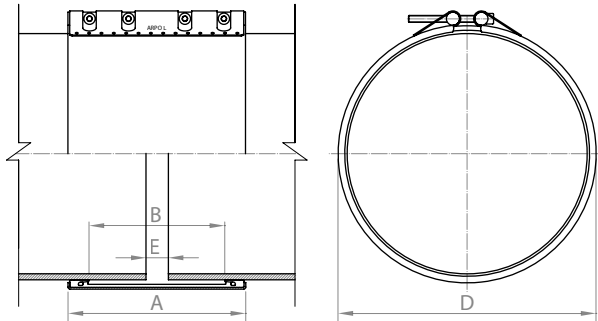
E¹ Permitted gaps without internal band E² Permitted gaps with internal band PS Working pressure DN Nominal Diameter OD Outside Diameter Tor. Torque Value

OD	Maximum diameter difference		Maximum angular deflection		Maximum misalignment	
	IBW - IGW	IHFW - IHGW	IBW - IGW	IHFW - IHGW	IBW - IGW	IHFW - IHGW
mm	mm		degrees		mm	
300 - 500	2,5		2,0		3,0	
500 - 1500	3,0	2,0	2,0	1,0	3,0	2,0

See page 7 (Permitted tolerances)

Coated nominal width 300

Serie AGW



To ensure correct operation, Fitting instructions must be respected.
Test pressure = 1.5 x PS

	AGW
	mm
A	301
B	230
D	DE + 30
E ¹	15
E ²	80

	Quality W1		Quality W2		Quality W4		Quality W5	
	AISI	DIN	AISI	DIN	AISI	DIN	AISI	DIN
Casing	1024	1.0570						
Bolts	1035 / 304	1.0501 / 1.4301						
Bars	1045 / 304 L	1.0503 / 1.4307						
Inner steel band (Lock)	304 L	1.4307						

Sealing gasket: EPDM

DN	PS bar	AGW Diam.	Tor. Nm
mm			
600	29	M 20	50
650	27	M 20	60
700	25	M 20	60
750	23	M 20	60
800	22	M 20	70
850	21	M 20	70
900	19	M 20	70
950	18	M 20	80
1000	18	M 20	80
1100	16	M 20	90
1200	15	M 20	100
1300	14	M 20	100
1400	13	M 20	120
1500	12	M 20	120

Nominal Diameter serve as guidance of the pressure scale. Measures in between DN range can be manufactured.

E¹ Permitted gaps without internal band E² Permitted gaps with internal band PS Working pressure DN Nominal Diameter OD Outside Diameter Tor. Torque Value

OD	Maximum diameter difference	Maximum angular deflection	Maximum misalignment
mm	mm	degrees	mm
500 - 1500	3,0	2,0	3,0

See page 7 (Permitted tolerances)

Applications.



1.

1. GRP pipe repair with a piece of pipe.

2. GRP pipe connection between manholes.

3. Galvanized steel line connection for air supply.

4. Aerial steel pipe installation in a waste water treatment plant.

5. Dismantling joint installation inside a manhole.

6. GRP pipe connection to a flange adapter.

7. GRP sewage system installation.



2.



3.

